



Noble Knight
Your Property Our Care



7 Emma Court Woori Yallock VIC

3 1 3

Set in a convenient location, 7 Emma Court, Woori Yallock presents as the perfect first family home or an ideal option for those looking to downsize without compromise. Freshly updated throughout, this well-maintained three-bedroom, one-bathroom home offers comfortable, low-maintenance living with space to enjoy both indoors and out.

The home features a generous living area, complemented by a functional kitchen and dining space that flows seamlessly to an impressive outdoor alfresco area, perfect for entertaining family and friends year-round. Upon arrival, established trees provide excellent privacy and create a welcoming sense of seclusion, while the home itself offers ample storage, a security system, gas ducted heating and reverse-cycle air conditioning for year-round comfort. Rear access leads to a substantial 7 X 6 metre shed

Type : House
Price : \$ 745,000
Land Size : 626 sqm
View : <https://www.nobleknight.com.au/sale/vic/yaradandenong-ranges/woori-yallock/residential/house/8590710>



Megan Tiberi
03 9730 1788

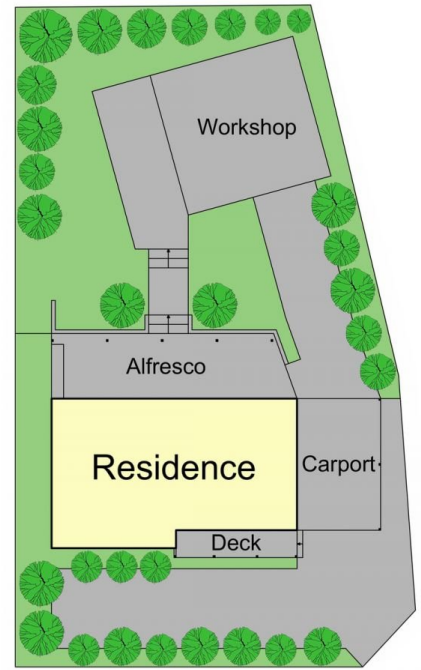
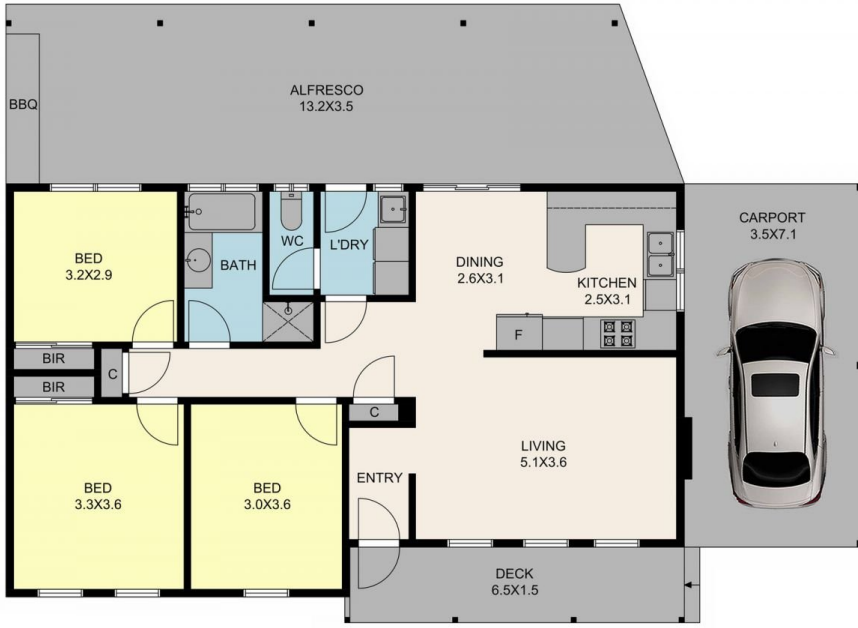


Damian Ford
03 9735 5677

[For full version visit the website](https://www.nobleknight.com.au)

<https://www.nobleknight.com.au>

0397355677



7 Emma Ct, Woori Yallock

TOTAL APPROX. FLOOR AREA 94 SQ.M

Whilst every attempt has been made to ensure the accuracy of the floor plan contained here, measurements of doors, windows, rooms and any other items are approximate and no responsibility is taken for any error, omission, or misstatement. This plan is for illustrative purposes only and should be used as such by any prospective purchaser.