



## 1 Range Road Yea VIC

3 2 4

Discover comfort, character, and convenience in this stunning 3-bedroom, 2-bathroom home, perfectly designed for low-maintenance living and effortless entertaining. With high ceilings and charming character finishes, the interior feels spacious, warm, and inviting from the moment you step inside.

The generous indoor-outdoor flow leads to an extensive covered alfresco area, complete with blinds for year-round enjoyment. It's the ideal space for relaxed family meals, weekend gatherings, or unwinding in total privacy. Outside, the property is set up for easy living with an expansive low-maintenance concrete driveway and excellent storage and workspace options.

**Type** : House  
**Price** : \$690,000-\$740,000  
**Land Size** : 742 sqm  
**View** : <https://www.nobleknight.com.au/sale/vic/shepparton-central-north/yea/residential/house/8572978>

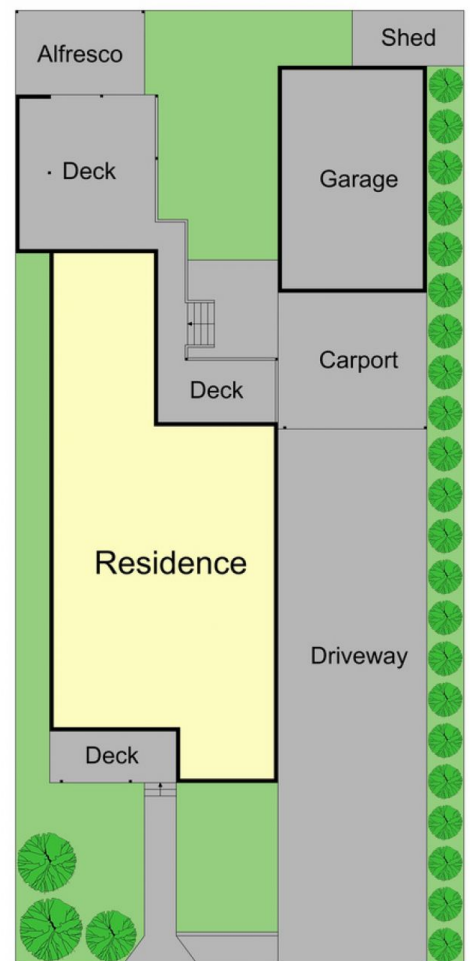
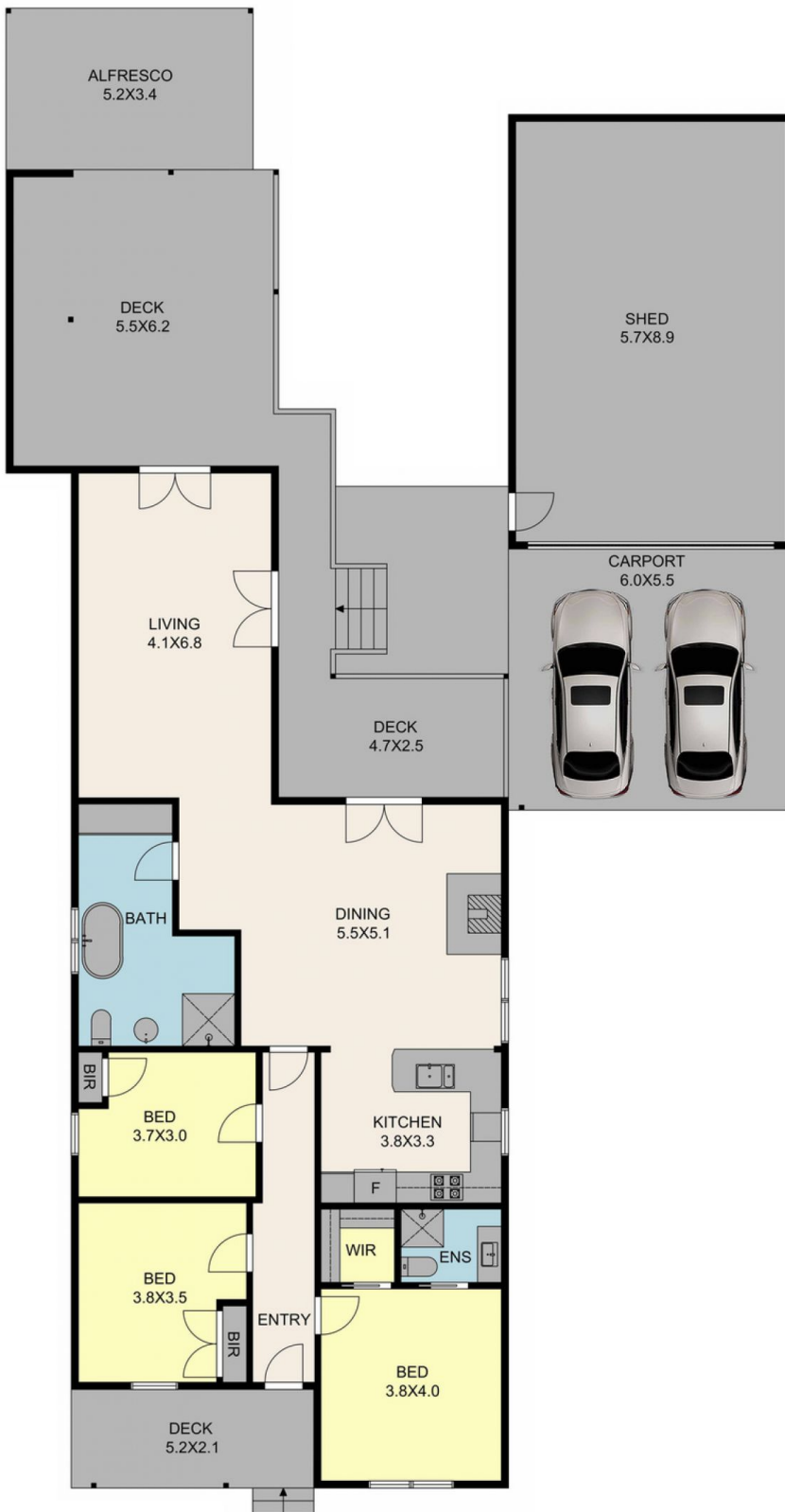


**Melissa Bell**  
03 5797 2500

[For full version visit the website](https://www.nobleknight.com.au)

<https://www.nobleknight.com.au>

0397355677



## 1 Range Rd, Yea

TOTAL APPROX. FLOOR AREA 145 SQ.M

Whilst every attempt has been made to ensure the accuracy of the floor plan contained here, measurements of doors, windows, rooms and any other items are approximate and no responsibility is taken for any error, omission, or misstatement. This plan is for illustrative purposes only and should be used as such by any prospective purchaser.