



1349 Myers Creek Road Toolangi VIC

4 🏠 2 🚗 4 🚗

One of Toolangi's finest lifestyle properties, featuring a parklike environment with a serene and established setting.

Perfect for the growing families that want more space and a country lifestyle close to the Yarra Valley. The Sandstone residence with a roofline of approximately 44 squares is a delightful four bedroom, two bathroom home. Featuring polished timber floor boards, central wood fire place, fully ducted RCAC throughout and large living zones, modern kitchen with Smeg appliances, 9ft ceilings, double remote garage with internal access and verandas on three sides. Large storage shed 8m x 11m with wood fire pot belly, 3 x wood sheds as well. The property also features irrigation drip system in garden beds, fire pumps & reels and plenty of water storage with 2 tanks totalling 155,000 litres.

Only 20 minutes to Healesville or Yarra Glen townships, this tranquil oasis awaits are family or a tree change couple that wants peace and quiet.

Price : \$1,250,000-\$1,350,000

Land Size : 4 Acres

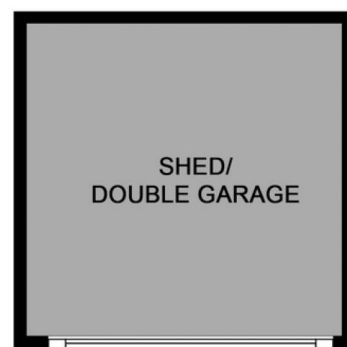
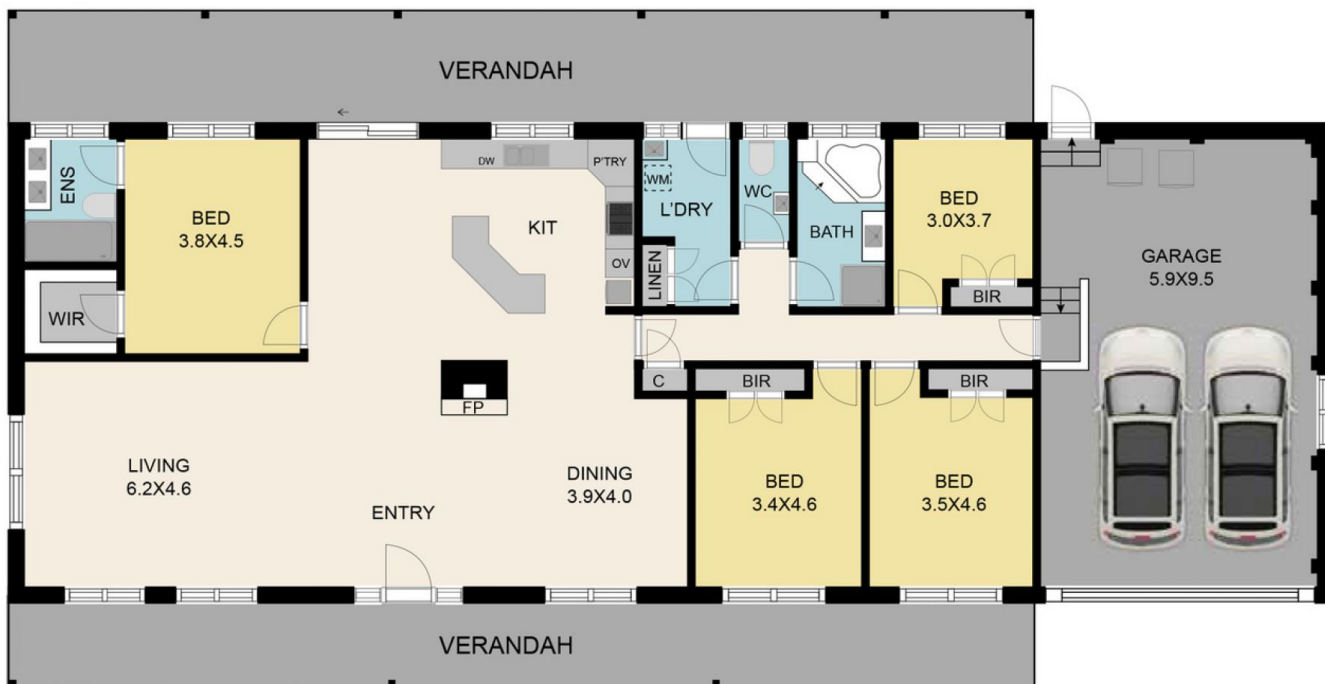
View : <https://www.nobleknight.com.au/sale/vic/yarra-dandenong-ranges/toolangi/residential/home/7973936>



Anthony Knight
03 5797 2500



Megan Tiberi
03 9730 1788



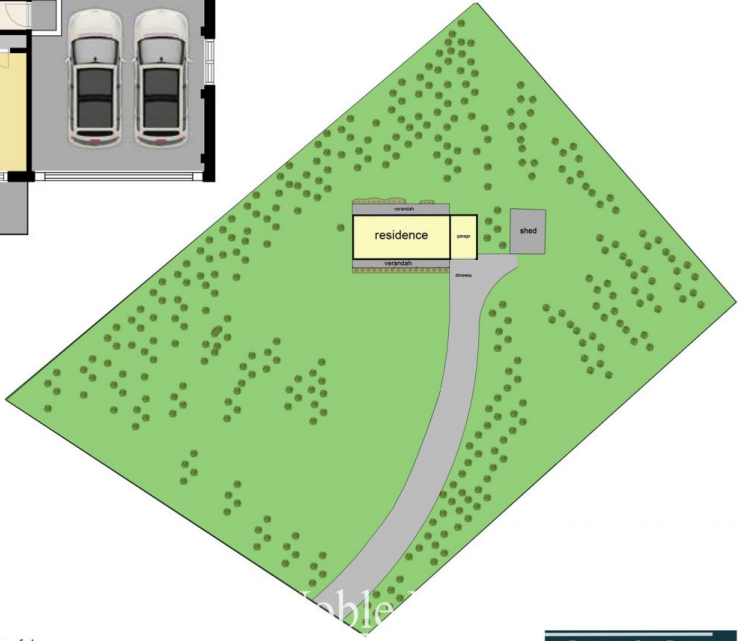
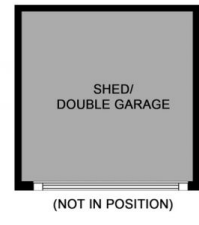
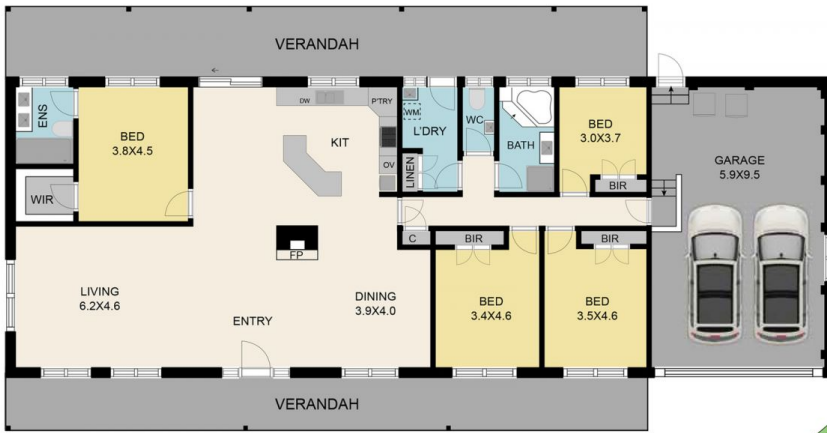
(NOT IN POSITION)

1349 Myers Creek Road, Toolangi 3777

TOTAL APPROX. FLOOR AREA 271 SQ.M

Whilst every attempt has been made to ensure the accuracy of the floor plan contained here, measurements of doors, windows and any other items are approximate and no responsibility is taken for any error, omission, or misstatement. This plan is for illustrative purposes only and should be used as such by any prospective purchaser.





1349 Myers Creek Road, Toolangi 3777

TOTAL APPROX. FLOOR AREA 271 SQ.M

Whilst every attempt has been made to ensure the accuracy of the floor plan contained here, measurements of doors, windows, rooms and any other items are approximate and no responsibility is taken for any error, omission, or misstatement. This plan is for illustrative purposes only and should be used as such by any prospective purchaser.

