



21 Yea Springs Drive Yea VIC

4 2 2

Discover your dream home at 21 Yea Springs Drive, a modern oasis in the heart of Yea. This generously proportioned, 2-year-old residence sits on an 815sqm block and offers the ultimate in modern living. The 4 bedrooms, including a luxurious main bedroom with ensuite, 2 bathrooms, and a versatile study provide ample space for your family. With a double garage, contemporary kitchen, multiple living areas, gas ducted heating, and evaporative cooling, every convenience is at your fingertips.

This meticulously maintained property is ideal for families, combining serenity with access to modern amenities. The generously sized main bedroom offers a peaceful retreat, and the property's proximity to the local high school and town amenities ensures convenience. Don't miss the opportunity to call 21 Yea Springs Drive your forever home. Contact us today to experience the luxury and comfort of

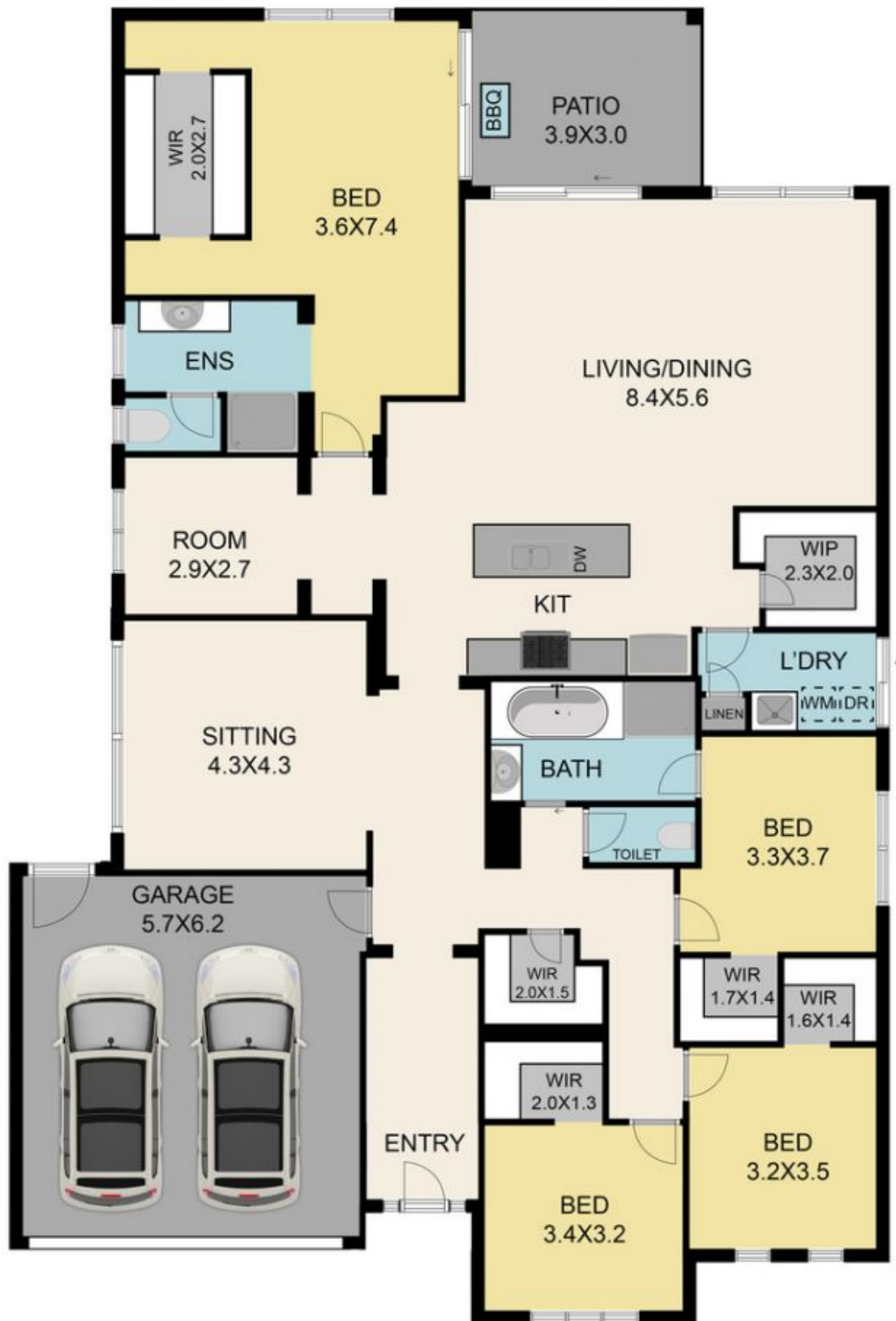
Price : \$740,000 - \$790,000
Land Size : 815 sqm
View : <https://www.nobleknight.com.au/sale/vic/shepparton-central-north/yea/residential/house/7817713>



Anthony Knight
03 5797 2500



Melissa Bell
03 5797 2500



TOTAL APPROX. FLOOR AREA 264 SQ.M

Whilst every attempt has been made to ensure the accuracy of the floor plan contained here, measurements of doors, windows, rooms and any other items are approximate and no responsibility is taken for any error, omission, or misstatement. This plan is for illustrative purposes only and should be used as such by any prospective purchaser.