



## 11/2D & 2E John Street Lilydale VIC

2 2 1

Discover the epitome of modern living in this exquisite off-the-plan townhouse, where elegance and convenience converge seamlessly. Crafted to perfection, this residence offers a lifestyle of luxury and comfort, poised to be completed in early 2024.

Step into a gourmet paradise with the quality kitchen that boasts stone benchtops, complemented by sleek two-tone cabinetry in white and oak finishes. Enjoy the ease of soft-close doors and drawers that exemplify fine craftsmanship. Unwind in the lavish bathroom retreats featuring ceramic accents and chic two-tone vanities paired with quality tapware along with one powder room, elevating your daily routines.

Designed to cater to your comfort, the townhouse offers reverse cycle cooling on the first floor, ensuring a pleasant

**Price** : \$ 575,000

**View** : <https://www.nobleknight.com.au/sale/vic/east/lilydale/residential/house/7714304>



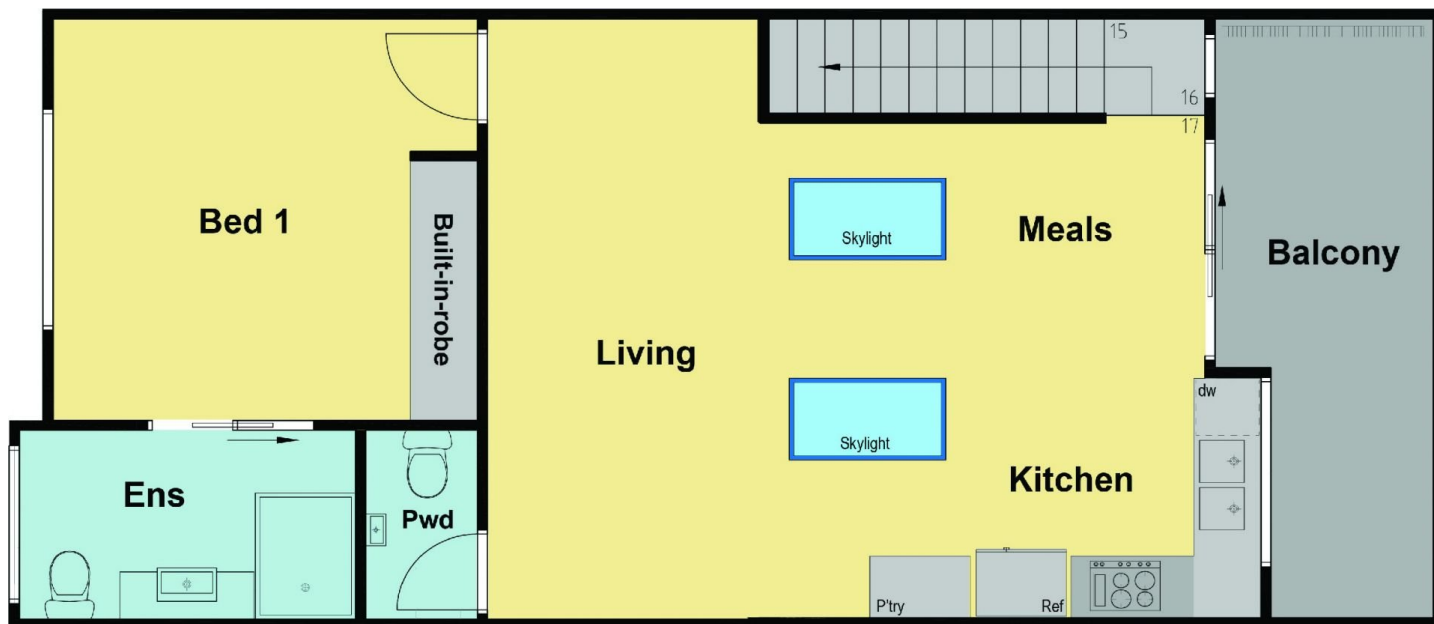
**Damian Ford**  
03 9735 5677



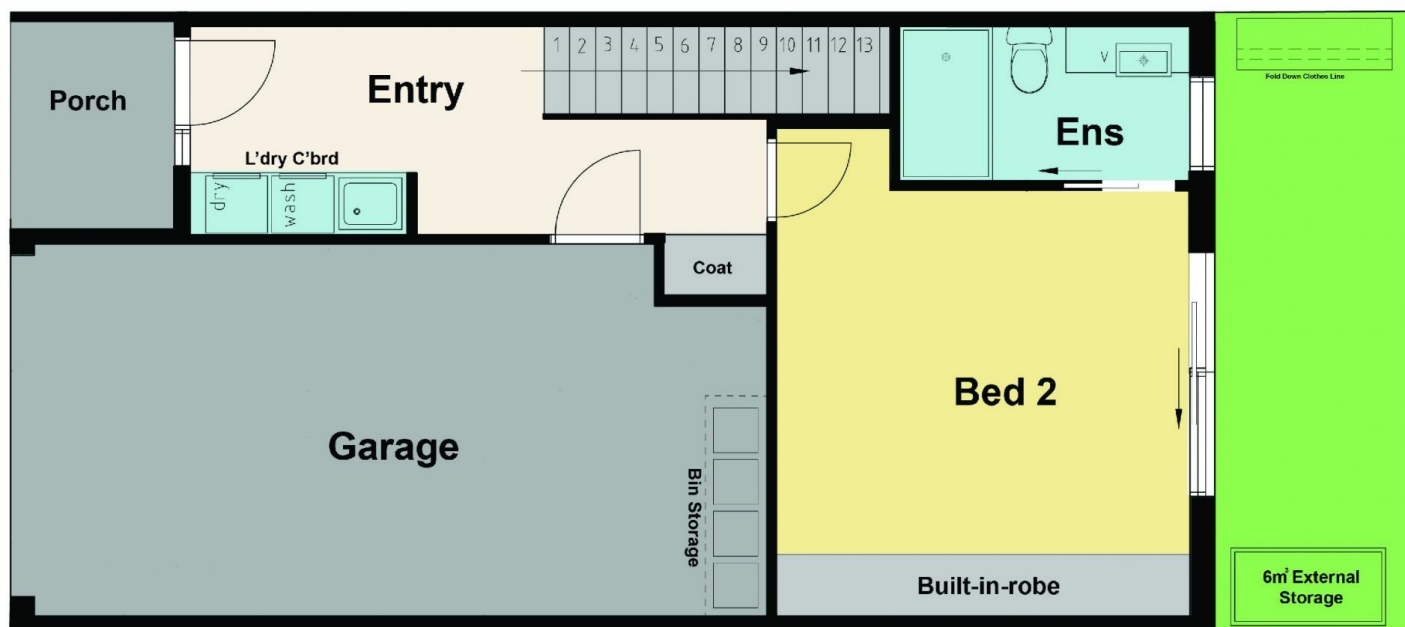
**Megan Tiberi**  
03 9730 1788

<https://www.nobleknight.com.au>

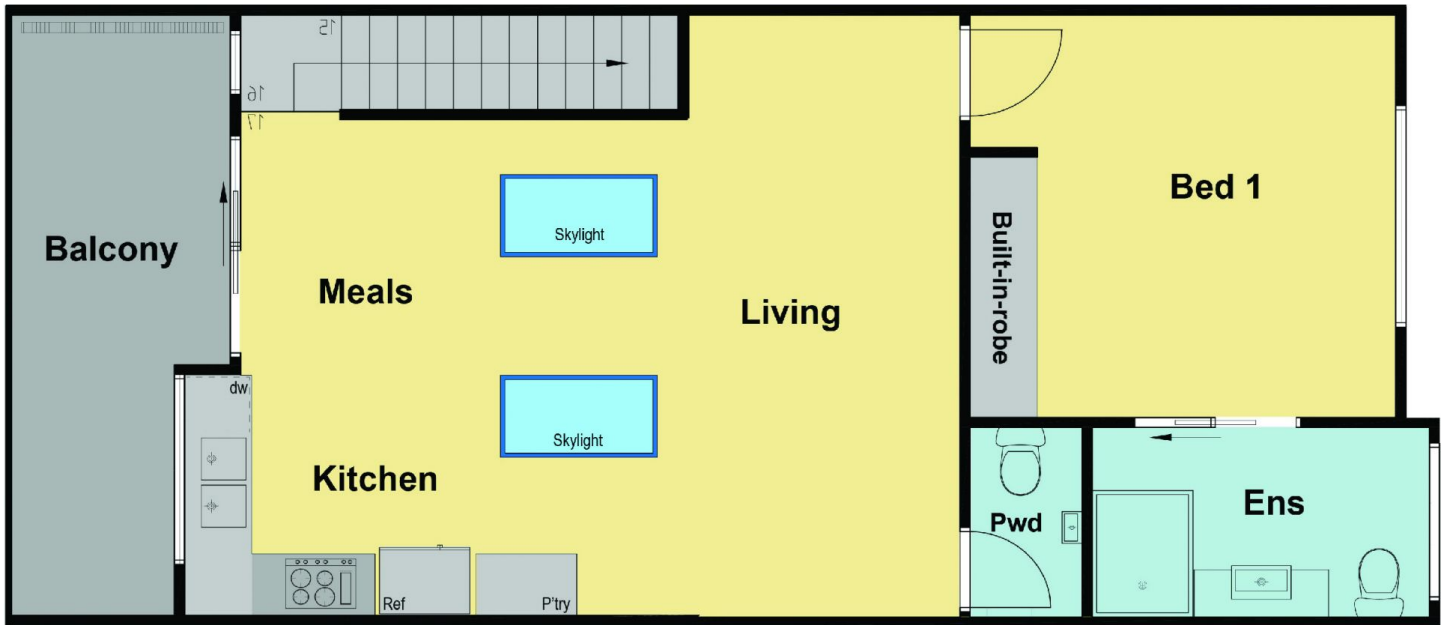
0397355677



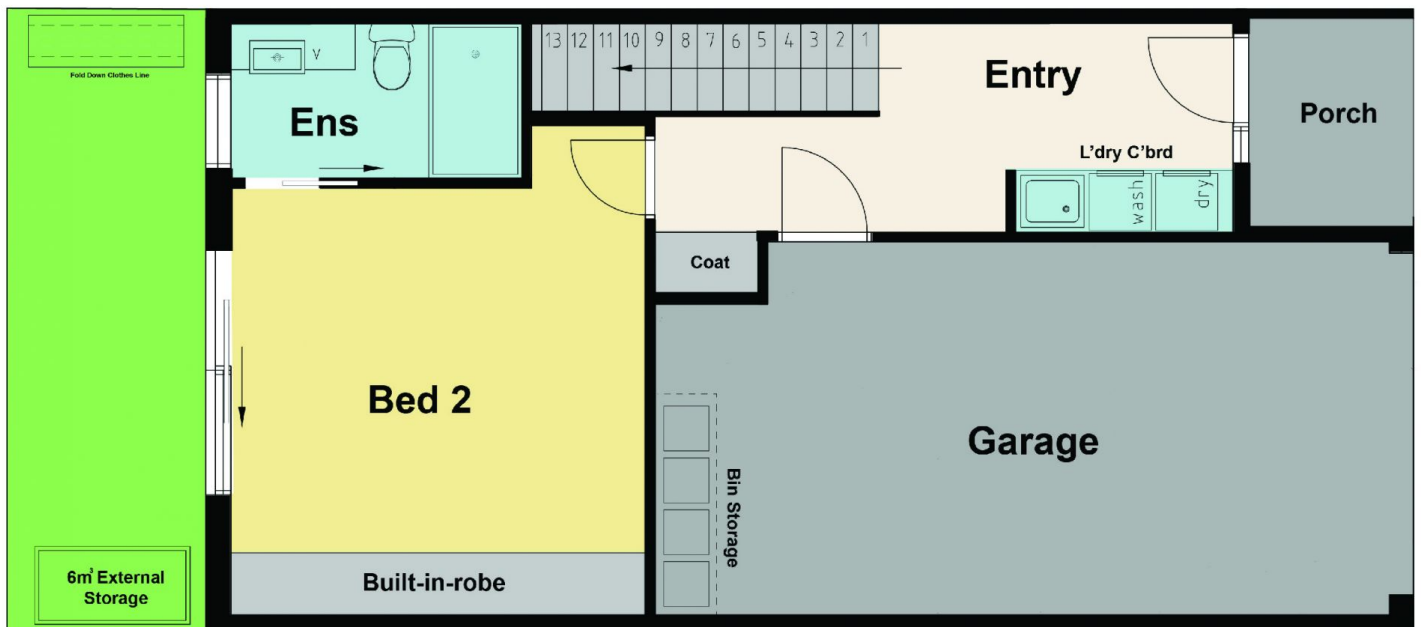
**Unit 5 - First Floor**



**Unit 5 - Ground Floor**



**Unit 8 - First Floor**



**Unit 8 - Ground Floor**