

15 Meadowgate Drive Chirnside Park VIC

- ? Land size of 186sqm approx
- ? Shop size 100sqm approx.
- ? 3 Offices plus Reception area
- ? Currently Leased
- ? Ample parking with rear access

Type : Offices
Building Size : 100 sqm
Land Size : 186 sqm
View : <https://www.nobleknight.com.au/sale/vic/east/chirnside-park/commercial/offices/7145812>

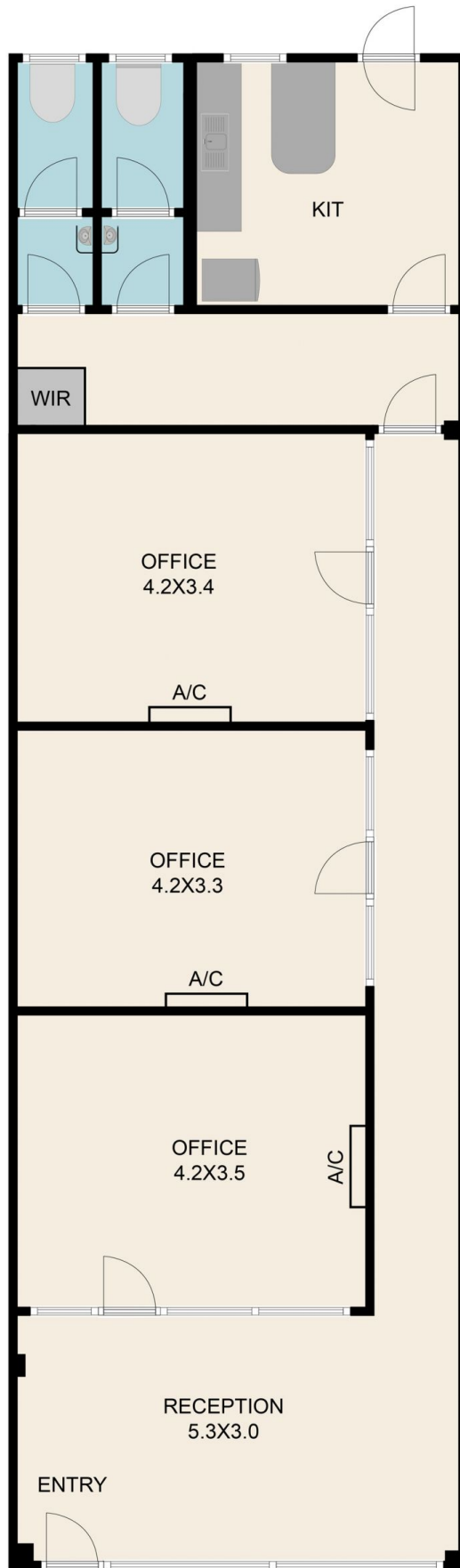
Please call Brad Knight on 0427 301 538 to discuss this opportunity further.



Brad Knight
03 9730 1788



Lauren Hendriks
03 9735 5677



15 Meadowgate Drive, Chirnside Park 3116
TOTAL APPROX. FLOOR AREA 97 SQ.M

Whilst every attempt has been made to ensure the accuracy of the floor plan contained here, measurements of doors, windows, rooms and any other items are approximate and no responsibility is taken for any error, omission, or misstatement. This plan is for illustrative purposes only and should be used as such by any prospective purchaser.