



1139 Kinglake - Glenburn Road GLENBURN VIC

6 3

Set on approximately 8.5 acres of fully usable land, sits this outstanding property which has massive potential. Whether you want to have your horses with you, a small herd of livestock or just escape the rat race while only being within 30 minute's drive to Lilydale this is one to look at. Take a walk through the picturesque gardens down to the main homestead which features approximately 30sq living which includes four bedrooms, two bathrooms, two living areas including a large open plan family area. All the comforts you require with a 900ml electric oven and gas stove top, evaporative cooling throughout, two coonara fire places along with an open fire place for the romantics. Additional to the main homestead the property boasts a separate 2 bedroom dwelling that is

Type : House
Land Size : 8.5 Acres
View : <https://www.nobleknight.com.au/sale/vic/shepparton-central-north/glenburn/residential/house/3543900>

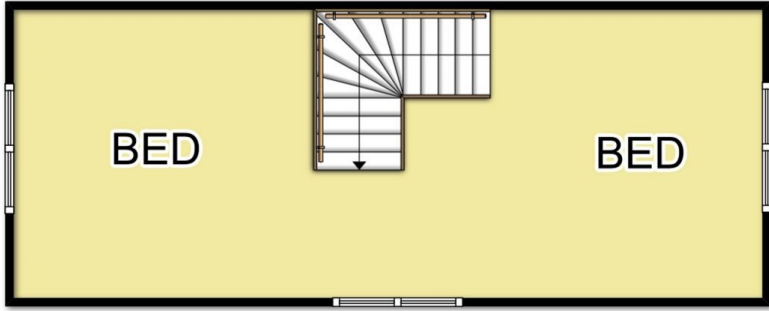


Damian Ford
03 9735 5677

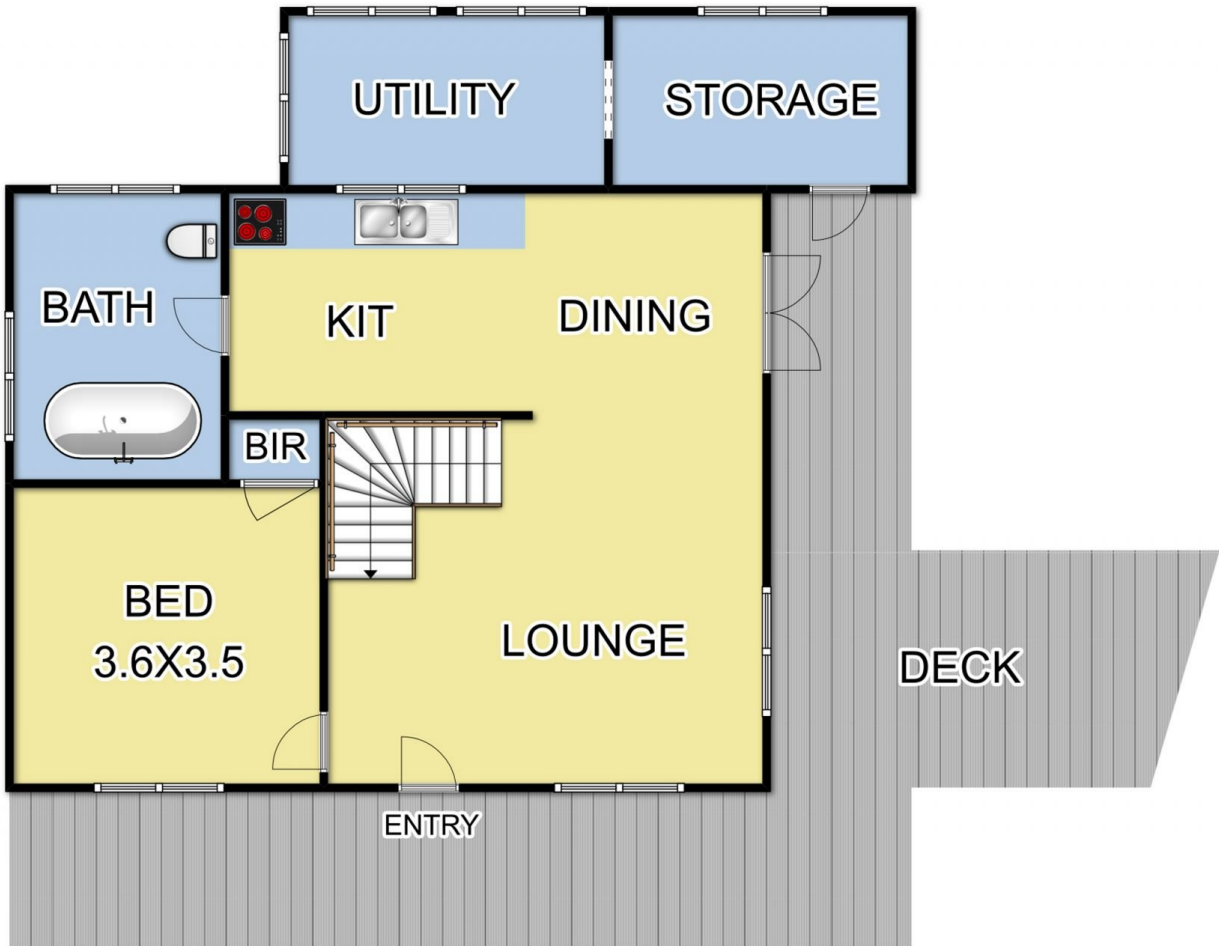
[For full version visit the website](https://www.nobleknight.com.au)



Fixtures & Fittings are for display purposes only. Measurements Approx. Not to Scale.
Produced by Open2view.com.au



FIRST FLOOR



Fixtures & Fittings are for display purposes only. Measurements Approx. Not to Scale.
Produced by Open2View.com.au