



**178 Castella Road CASTELLA VIC**

7 5 7

A piece of paradise on 12.74 acres approx plus river lease of another 1.97 acres approx. Nestled on the Yea River with pumping rights of 2 Megalitres the impressive home is of solid brick construction with a roofline of 50 squares.

The main section of home consists of 4 bedrooms with 3 bathrooms, formal lounge with OFP, formal dining & kitchen family room. In floor heating and wood combustion to warm the home.

Large rumpus room with wet bar, home office or Studio/Gallery with sink.

The home extends to a further 3 bedrooms for a large family or Bed & breakfast opportunity (STCA).

Solar back to the grid, beautiful established gardens with sprinkler system.

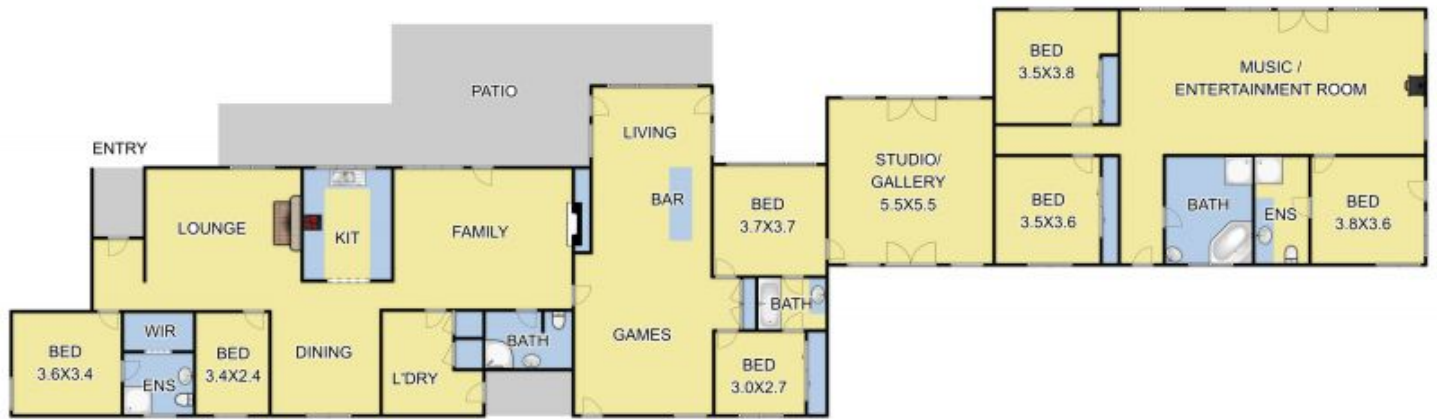
Triple carport plus workshop of 8.5m x 9m lock up machinery shed 7.5m x 12m for all your toys.

'Landsdown' is a lifestyle country retreat that offers

**Building Size** : 50 Sqrs  
**Land Size** : 12.74 Acres  
**View** : <https://www.nobleknight.com.au/sale/vic/yarradandenong-ranges/castella/residential/house/2999707>



**Anthony Knight**  
**03 5797 2500**



Fixtures & Fittings are for display purposes only. Measurements Approx. Not to Scale.  
Produced by Open2view.com.au