



**Lilydale, VIC**  
6 Kuro Place

**3** BED **2** BATH **2** CAR

**Noble Knight**  
Licensed Real Estate Agents, Auctioneers and Property Managers  
*Your Property Our Care*

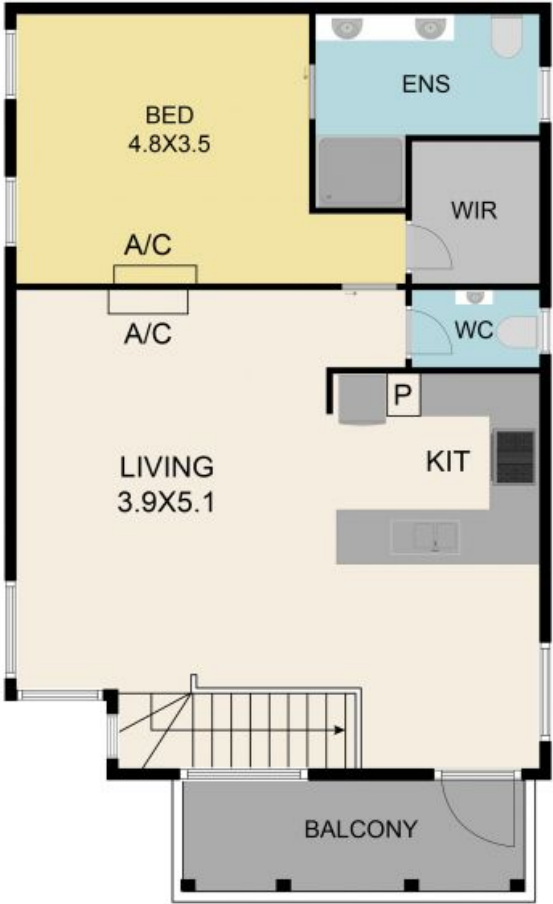
(ACCESS VIA ROBERT & BLACK STREET)  
This near new townhouse oozes class and comfort while also delivering an ease of convenient living. The cleverly designed floor plan offers two levels with a seamless flow and light filled interior throughout. Showcasing three robed bedrooms (master with walk in robe and ensuite), master bathroom, spacious open plan living and fully equipped kitchen with stainless steel appliances and dining space.

The home features split system heating and cooling, internal double garage access, double glazed windows, balcony and is ideally situated at the front of its complex.

Located within walking distance to the Main Street of Lilydale and the Lilydale Train Station, schools and parks, this property is truly in a class of its own.

**\$630,000-\$670,000**  
**Contact:**  
**Type:** Townhouse  
**Land:** 138m2  
<http://www.nobleknight.com.au>

6 Kuro Place  
**Lilydale**



FIRST FLOOR



GROUND FLOOR



Indicative only. Dimensions are approximate. All information contained herein is gathered from sources we believe to be reliable. However, we cannot guarantee its accuracy and interested persons should rely on their own enquiries.

Plans shown are only indicative of layout. Dimensions are approximate.

**Lilydale, VIC**  
6 Kuro Place